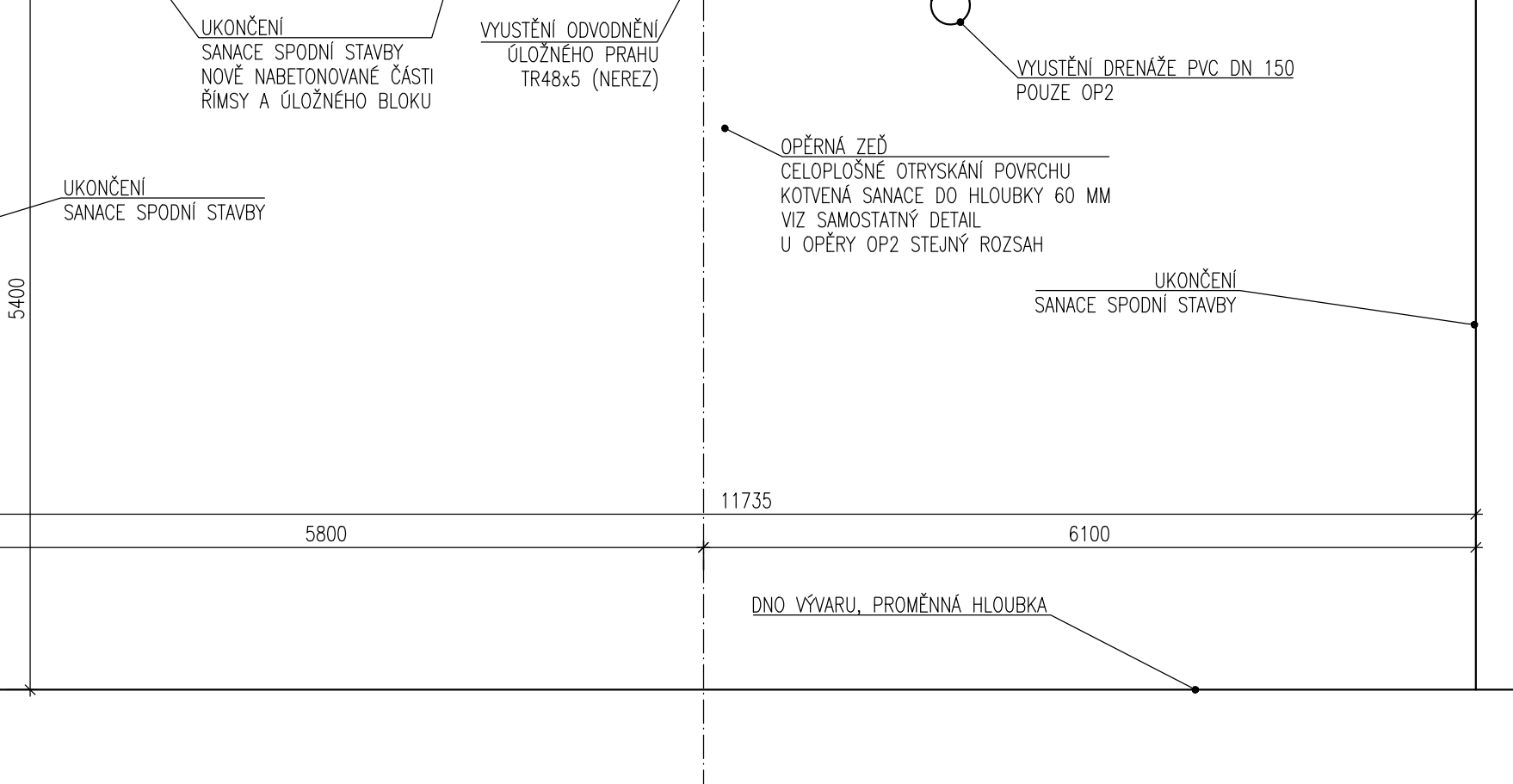


M 1:50



M 1:20

KONCE ZABRADLÍ BUDOVOU ZASLEPENY

110

1100

351

265

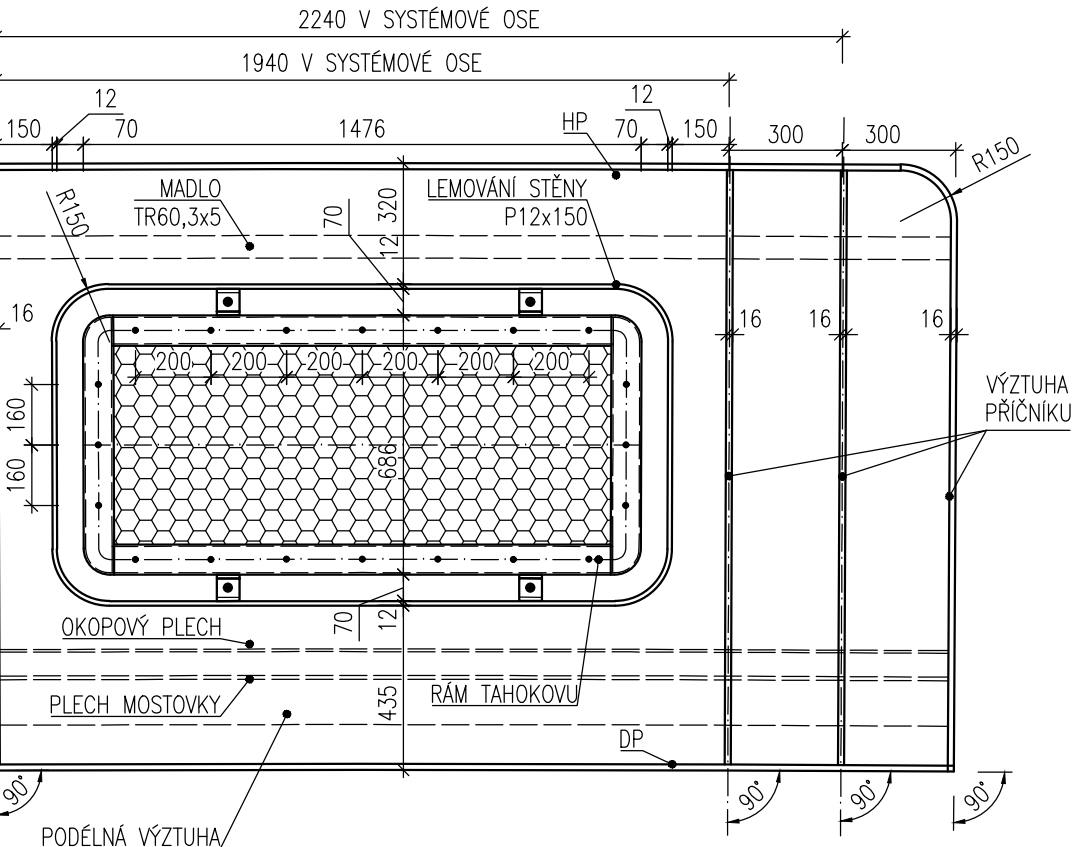
300

PLECH KRYCÍ ÚLOŽNÝ PRAH

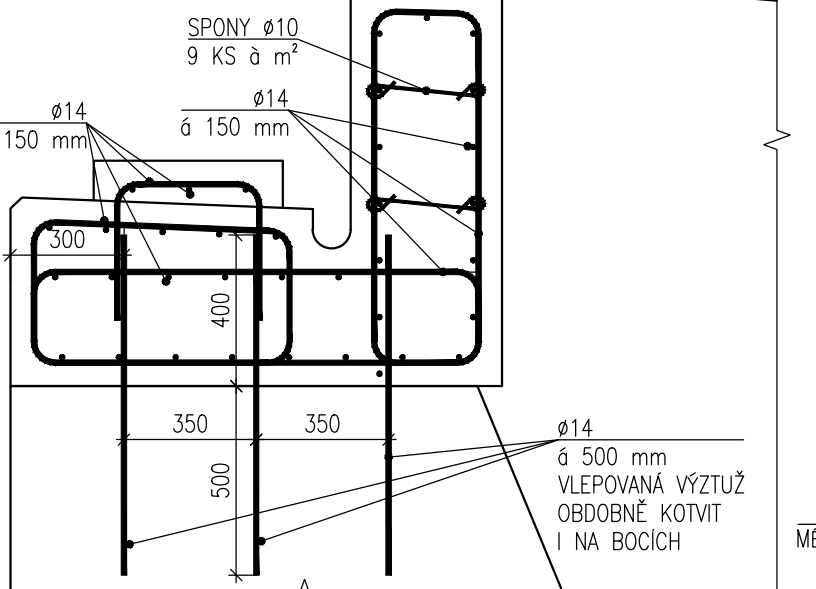
**M 1:5**  
**STYČNÍK PRO UCHYCENÍ**  
 TAHOKOVO P6x60-60  
 ŠR. M10 ISO 7380  
 MAT. M10 DIN 1587  
 PODL. M10 DIN 125A  
**LIŠTA DRŽENÍ**  
 TAHOKOVO P4x50  
 ŠR. M6 ISO 7380  
 MAT. M6 DIN 1587  
 PODL. M6 DIN 125A  
 SIŤ TAHOKOV TL.3mm  
 VÁLCOVANA, ŽAROVNĚ POZINK  
 VELIKOST OKA ČKA 35x35mm  
 UMÍSTIT VNĚ  
**LEMOVANÍ**  
**RAM VÝPLNĚ**  
 TAHOKOVO P10x60

Technical drawing of a shaft (ODVODNOVAČ) with a keyway. The shaft has a diameter of 48 mm and a length of 390 mm. The keyway has a width of 16 mm and a depth of 5 mm. The keyway is located 16.5 mm from the right end. The shaft is labeled 'NEREZ A4'. The drawing includes dimensions for the keyway and the shaft length, and a scale of 1:5.

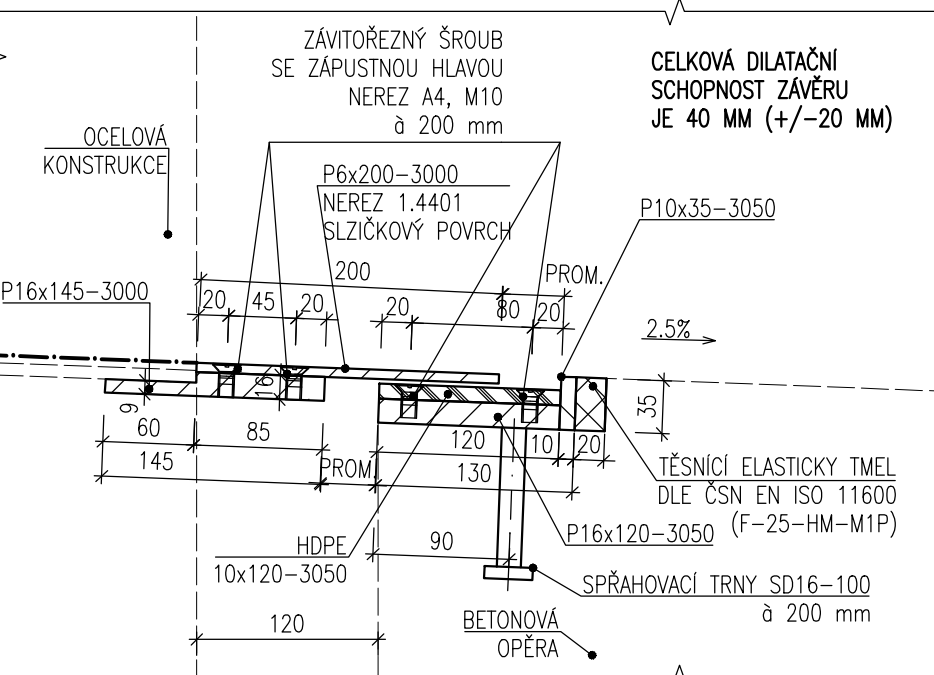
## M 1:20



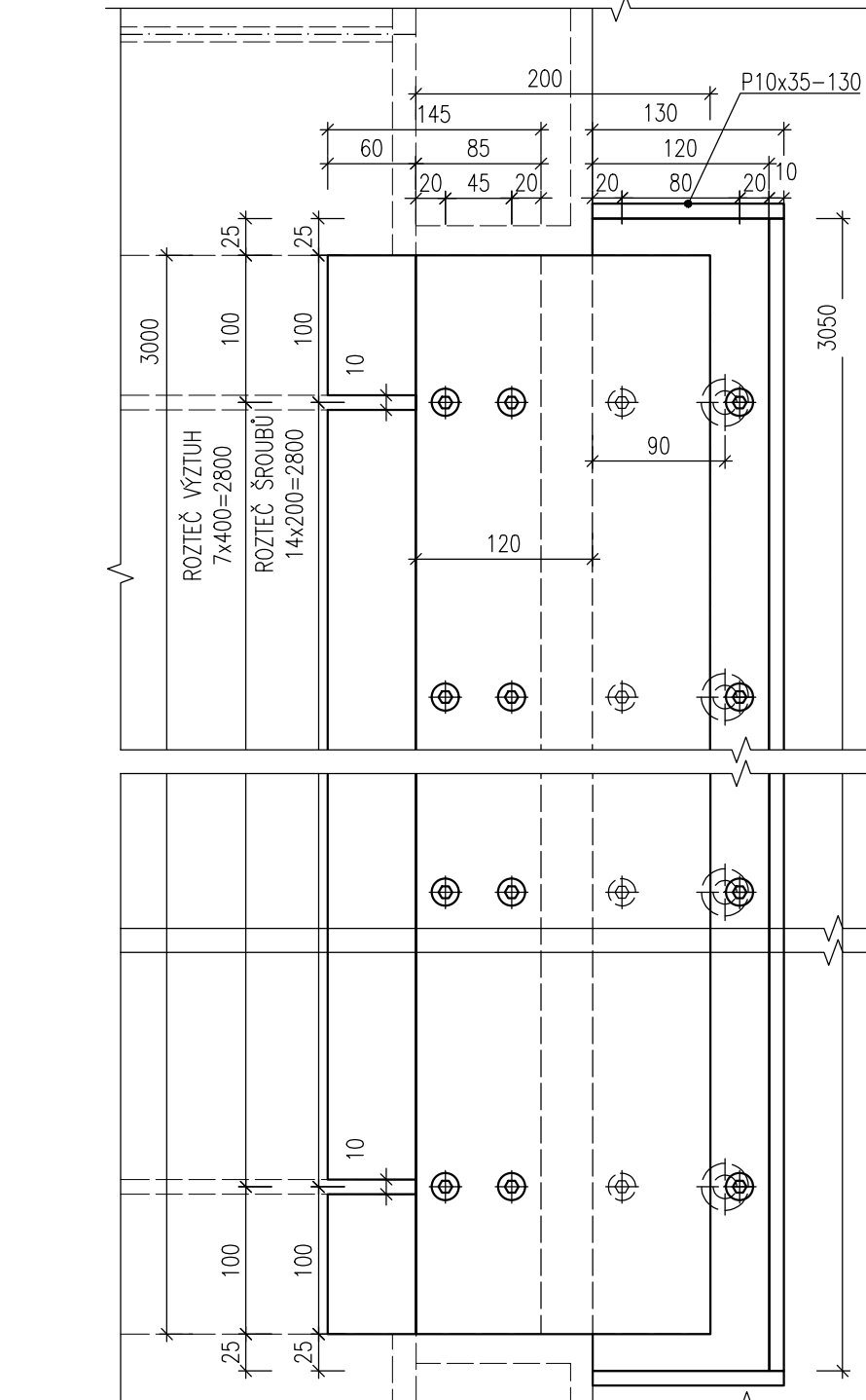
## M 1:20



## M 1:5

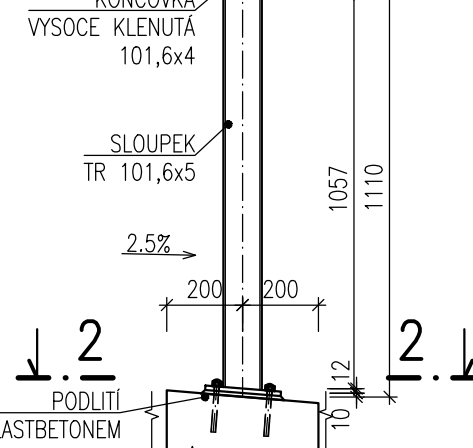


## M 1:5



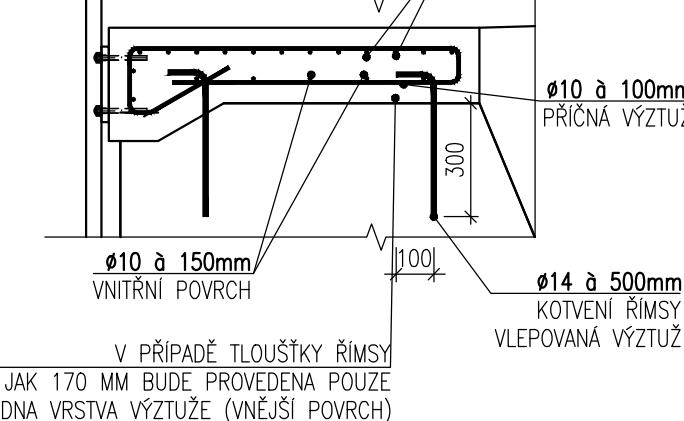
---

M 1:20



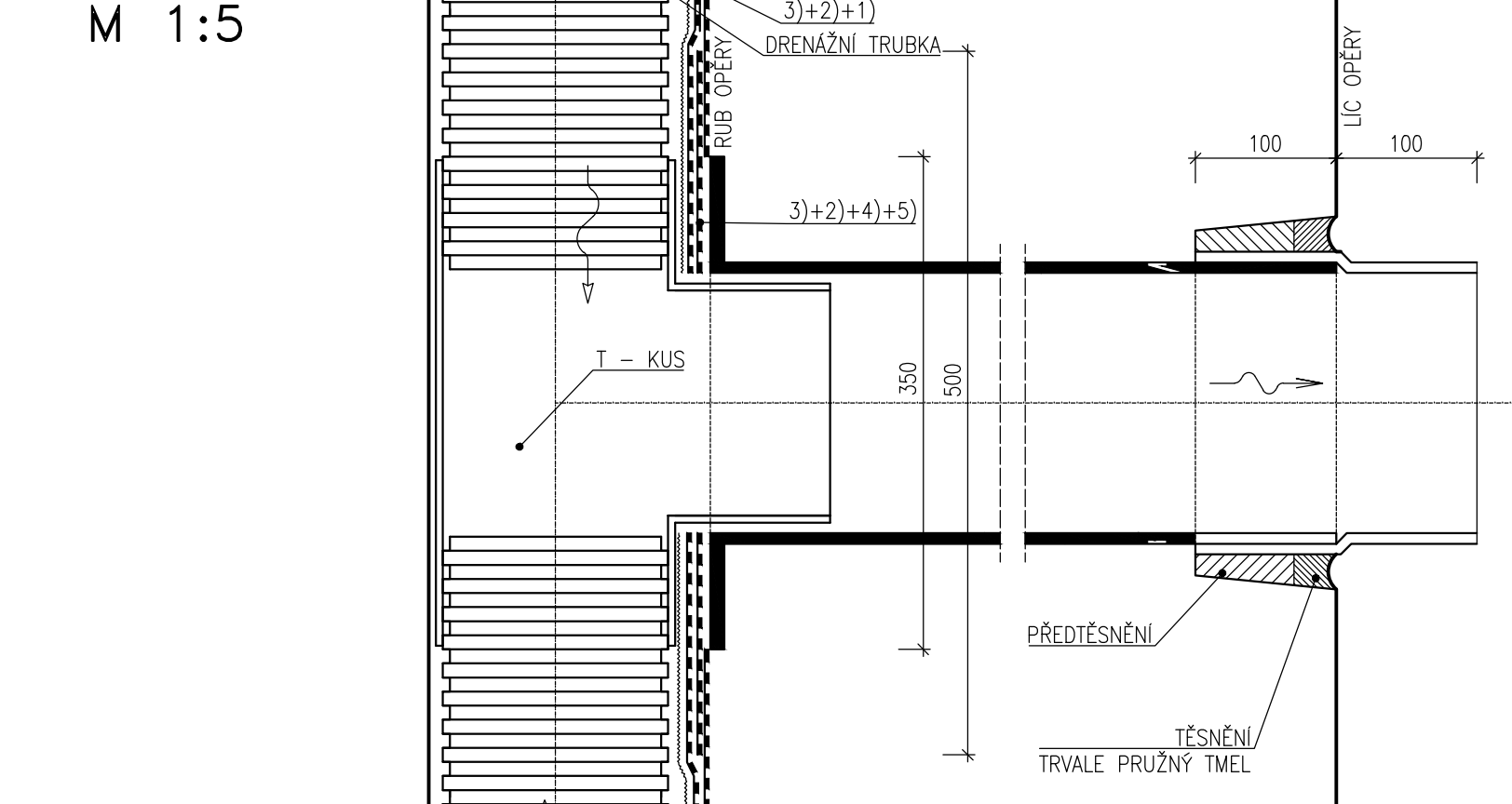
Technical drawing of a square plate with a central hole and four corner holes. The plate has a 200x200 mm outer dimension. The central hole has a diameter of 16 mm. The four corner holes have a diameter of 10 mm. The distance from the center of the central hole to the center of each corner hole is 140 mm. The distance from the center of the central hole to the nearest corner of the plate is 100 mm. The distance from the center of each corner hole to the nearest corner of the plate is 30 mm. The plate is made of TR101.6x5. The drawing is at a scale of M 1:10. The plate is labeled with 'PATNI P12x'.

## M 1:20



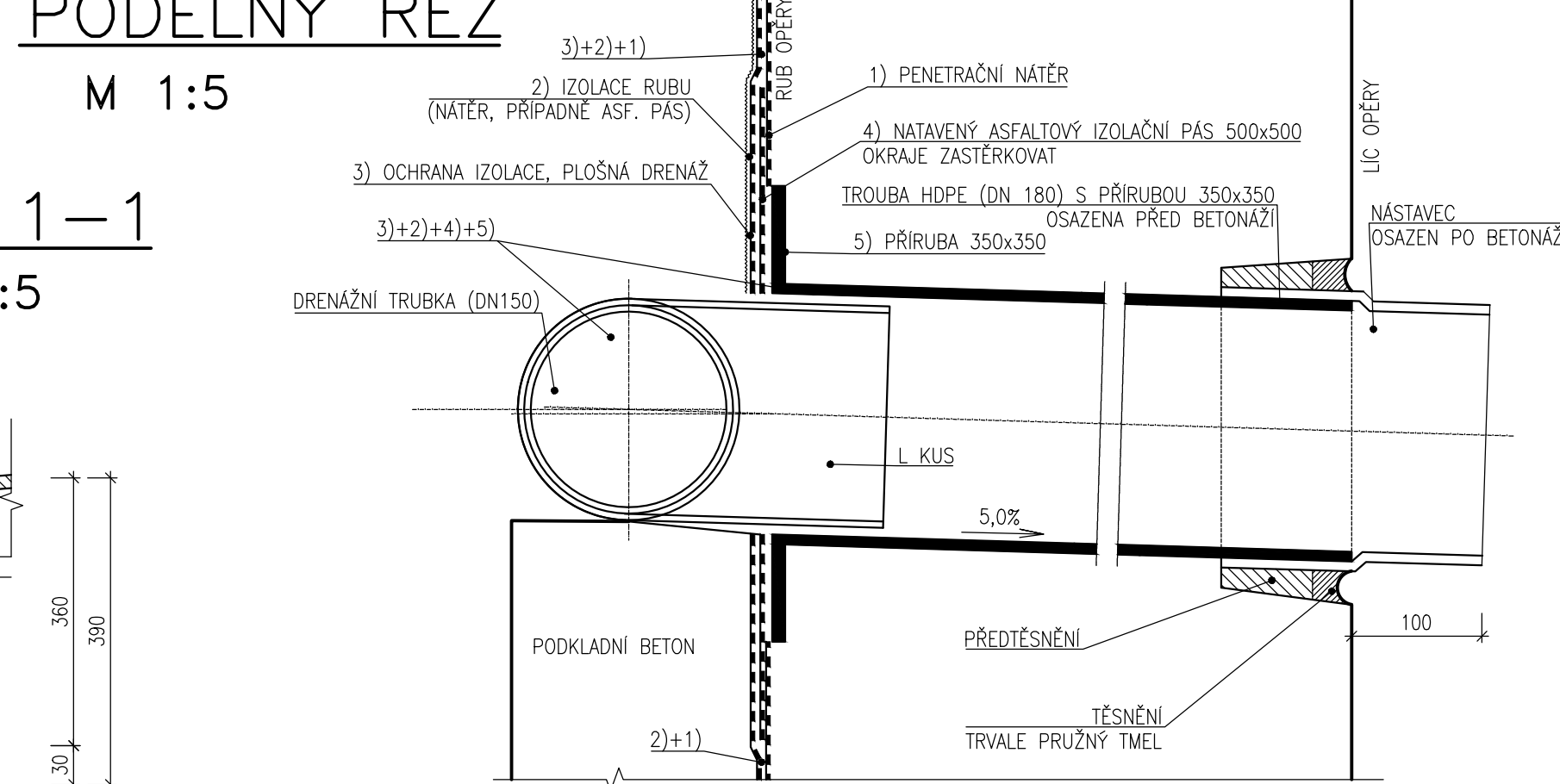
---

M 1:5



---

M 1:5



M 1:5

Technical drawing showing a cross-section of a roof structure. The drawing includes dimensions: 165 mm for the roof thickness, 165 mm for the wall thickness, and 30° for the roof pitch. The drawing is labeled 'M 1:5'.

ZMĚNA		DATUM		PROVEDL		PODPIS	
HIP		ZOD. PROJEKTANT		VYPRACOVAL		KONTROLOVAL	
ING. JIŘÍ TEJCH KONEČNÝ		ING. MIROSLAV LOUČKA		ING. MIROSLAV LOUČKA		ING. ANTONÍN PEČAL, CSC.	
OBJEDNATEL		MĚSTO BŘECLAV					
		LÁVKA VČELINEK					
STAVBA		D. DOKUMENTACE OBJEKTŮ					
		SO 201 – LÁVKA					
OBJEKT		DETAILY					
PŘÍLOHA		05					

<b>PIS PEČAL, s.r.o.</b> Projektové a inženýrské služby 602 00 BRNO, Lidická 42 tel: 731 482 865, 513 030 460, e-mail: <a href="mailto:pis@pispechal.cz">pis@pispechal.cz</a>			
DATUM	LEDEN 2021	KRAJ	JIHOMORAVSKÝ
STUPEŇ	PDP/PDPS	OKRES	BŘECLAV
ČÍS.ZAK.	P2/046/220	MĚSTO	BŘECLAV
MÉRÍTKO	1:20;1:10;1:5	FORMÁT	10xA4
ČÍS.PŘÍLOHY		ČÍS.PARÉ	